

HESTERBERG
PIPE SUPPORTS
& ENGINEERING



www.hesterberg-gmbh.com



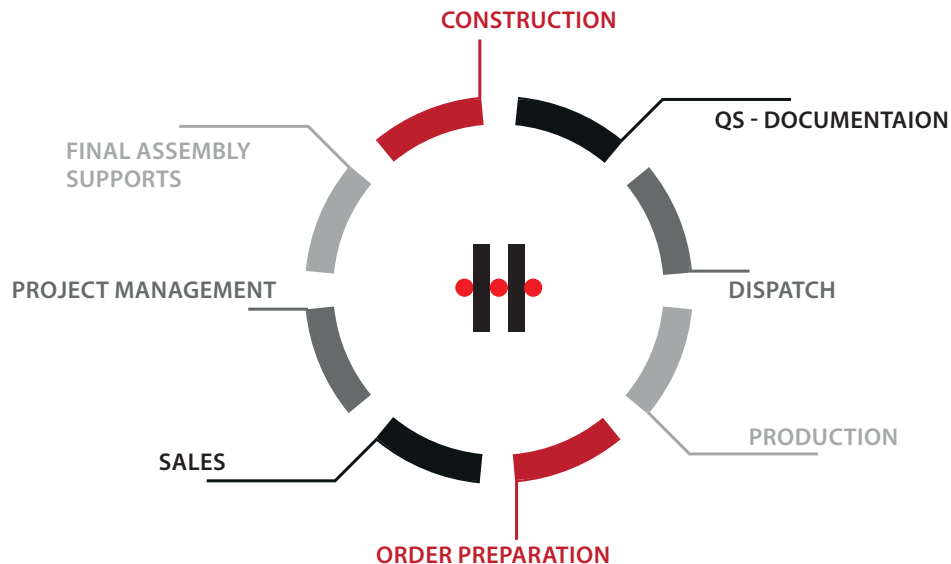


One of the leading specialists for pipe supports worldwide.

We have been manufacturing and supplying pipe supports for varying applications for no less than three decades. Many of our customers and employees have been loyal to us right from the time the company was established in the eighties.

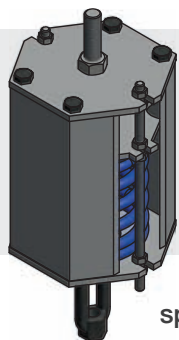
Our company and product range have expanded constantly since then. Excellently trained engineers, experienced application engineers and efficient production ensure that Hesterberg ranks worldwide as one of the top consultants and problem solvers in the field of pipe supports. We react flexibly and individually to the special needs of our customers, thus always finding optimum solutions to all tasks presented and the scale of the projects involved.

- **COMPLETE SPECTRUM OF PIPE SUPPORT AREA**
- **DYNAMIC PIPE SUPPORT**
- **ISOLATED SYSTEMS**
- **INDIVIDUAL SOLUTIONS**
- **DESIGN AND MANUFACTURING BASED ON EACH CATALOG**

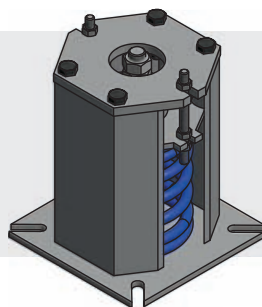
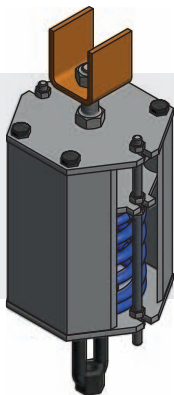




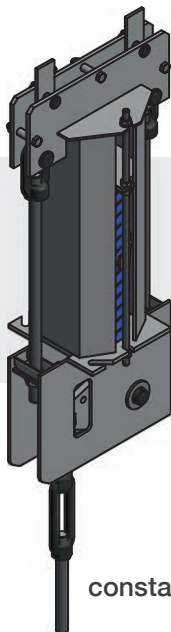
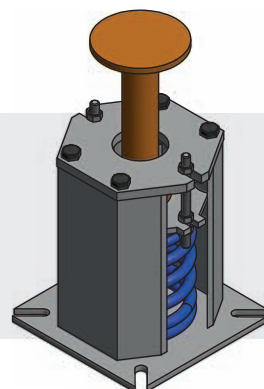
ENTIRE PRODUCTS



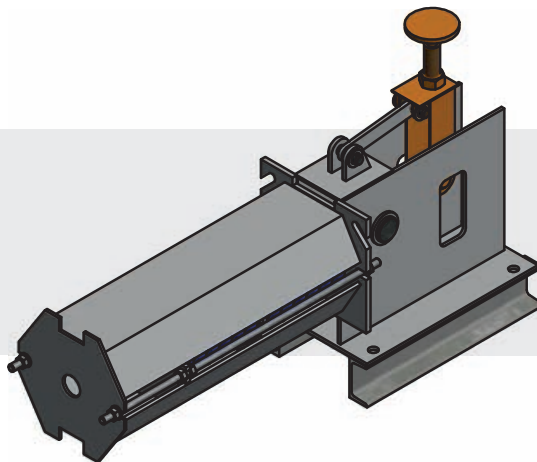
spring hanger



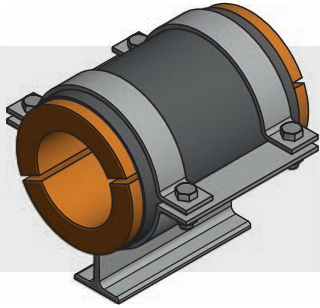
spring support



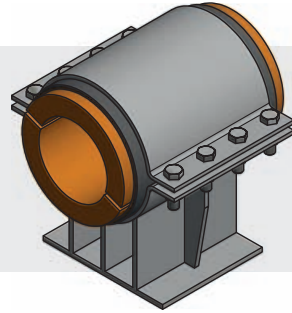
constant hanger



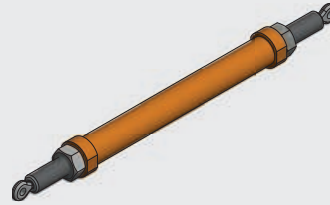
constant support



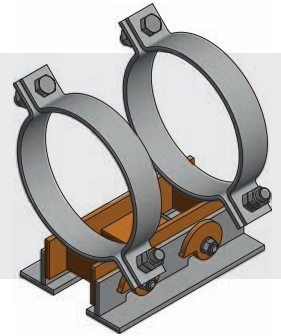
pipe supports for
high temperature



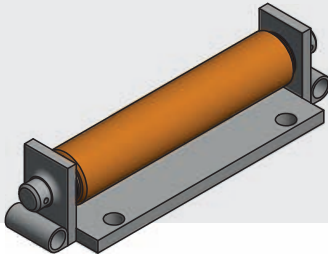
pipe supports for
cold temperature



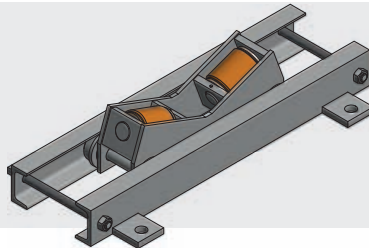
sway struts



high adjustable
pipe supports



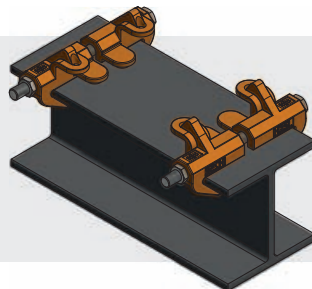
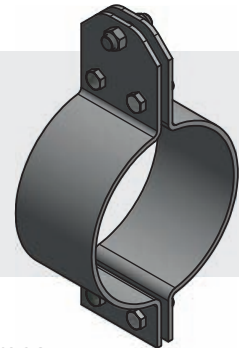
cylinder-roller
support



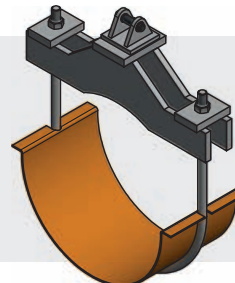
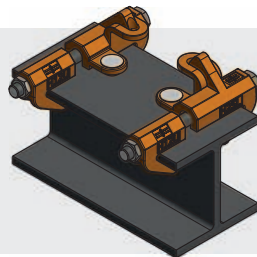
double cylinder-
roller support



pipe clamps



clamping systems



u-bolt clamp



sway and shock
suppressors



PRODUCTS

Hot service pipeline systems (Temperature of + 300°C to + 650°C)

(Pre-insulated pipe supports, pipe supports made from high temperature steel, spring hangers, constant hangers, sway struts, sway and shock suppressors, roller supports)

Cold and cryogenic pipeline systems (Temperature of - 196°C to + 120°C)

(pre-insulated pipe supports for cryogenic pipes, pipe supports made from low temperature steel with or without thermal separation)

Standard pipe supports (Temperature of - 15°C to + 300°C)

(Rests, guides, fixpoints, hangers, vertical supports and standard clamping systems)

Accessories for low friction pipe supports

(Sliding plates with chambered PTFE inlays, polished stainless steel sliding surfaces in screwed or welded execution)

Spring hangers (Temperature of - 20°C to + 80°C)

(Standard Design)

Spring hangers (Temperature of - 40°C to - 60°C)

(Special Design)

- **CUSTOM PIPE SUPPORTS**
- **CONSULTING & ACCOMPANYING TO ASSEMBLY**
- **HIGH QUALITY**
- **MODERN TESTER EQUIPMENT**

Please benefit from our service, experience, quality & economic thinking.

**Special Designs**

Since its establishment Hesterberg GmbH & Co. KG has been producing pipe supports and suspensions mainly order-related. Our engineering department is able to provide pipe supports for all special applications.

Through the experience and know-how associated with the engineering department Hesterberg has been able to prove its high level competence in generating customer-oriented special designs.

Service on the construction site

We offer:

- training of erection personnel (for products and installation)
- supervision of erection
- final inspection of the installed products

Certified Quality

Our engineering department, involving engineers from the specific areas of operation, not only provides technical supervision of our standard products but also works consistently on improving and upgrading our pipe support systems. Providing high quality has always been one of our most important principles and forms the basis of our activities, whether in-house or with our partners.

This is achieved for example by certification in accordance with DIN 9001 for engineering and manufacturing, the qualification for welding steel structures (DIN 18800-7) as well as the certification for design and manufacture of supports for nuclear power stations.

DIN EN 1090 / DIN EN ISO 3834-2 / DIN ISO 9001:2008 / KTA 1401 / TOP AREVA SUPPLIER

Modern production for highest quality

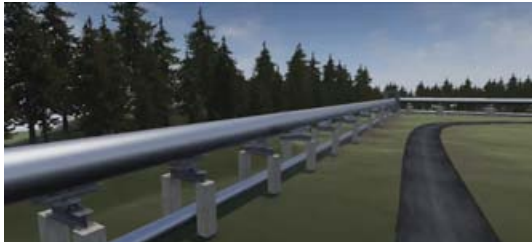
Specially developed test stands enable products to be tested immediately and equipped with the required documentation. The employees have been working for many years and master their craft down to the last detail.

So you can quickly find a solution even for unusual questions.

Special manufacturing processes and processes also ensure long-lasting products.

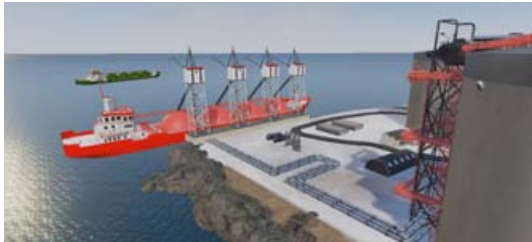


INSTALLATION LOCATIONS



Overland pipelines

Pipelines are suited to the transport of gaseous, liquid and solid substances. The pipe supports that are required vary in cost, depending on the substances being transported and the technical conditions.



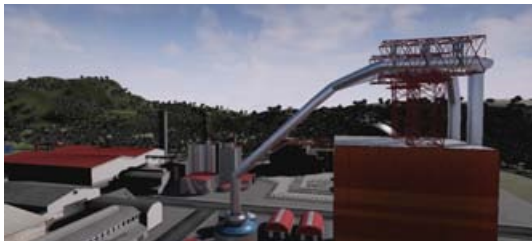
LNG installations

LNG stands for “liquid natural gas.” The natural gas is cleaned in the process and cooled to -192°C . Being liquid at this temperature, the gas can now be transported more easily in special tanks.



Power plants

The most variable forms of power plant energy generate electrical power and, in part, also district heating. The energy sources used can be coal, oil, gas or waste materials.



Steel mills

Industrial plants encompass a broad field of chemical works, petrochemical- and waste combustion plants. Steel is produced from pig iron in furnaces or by the electrical steel route.



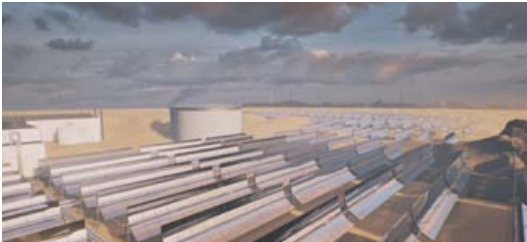
Nuclear power plants

Relative to the demands on quality, qualifications and documentation, nuclear power plants (also known as atomic power plants) are the most demanding installations in the family of power plants. Safety has the uppermost priority here.



Refinery

These installations separate crude oil, natural gas and coal into chemical substances. Products such as methanol, ammonia, and fuels can be extracted.



Solar Power Plants

Sunlight is converted into electrical power using this process.

There are various methods to do this. These processes belong to so-called „renewable energies.“



District heating

The most variable forms of power plant energy generate electrical power and, in part, also district heating. The energy sources used can be coal, oil, gas or waste materials. There are, however, also power plants that use waterpower, wind, energy from the sun and atomic power.



Petrochemical installations

Petrochemistry is basically involved with the synthesis of hydrocarbon compounds from components of petroleum and natural gas. Quantitatively speaking, the area of petrochemicals is the most important part of chemistry.



Offshore / Shipbuilding

The realm of seawater atmospheres, in addition to all of the other exposures, gives rise to increased corrosion exposure for the pipe material and pipe supports. Surface protection in particular is an important topic here.



DESIGN PROGRAM „ELSE“

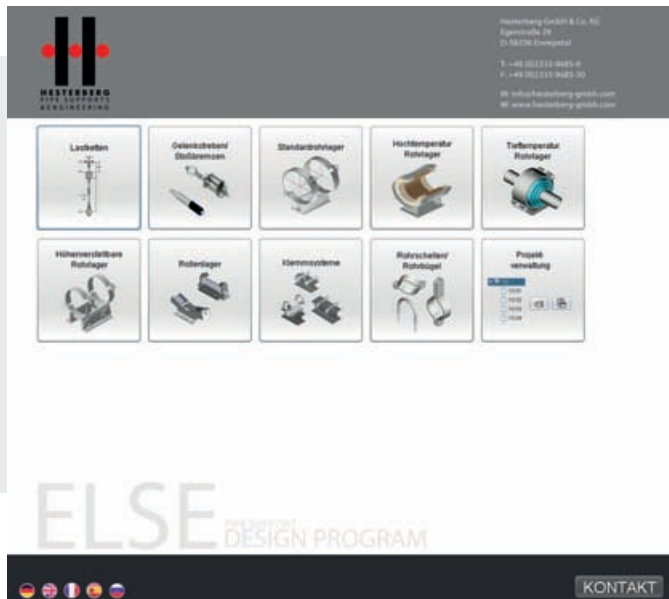
ELSE: support of planning

Our modular design program „ELSE“ supports the planner in the detailed engineering of pipe supports.

The user is guided through the menu by a dialog system und discovers the combination of supports which conforms to the inserted requirements.

2D-Drawings with part list, documentation in various languages, collecting bills and order proposals can be generated afterwards.

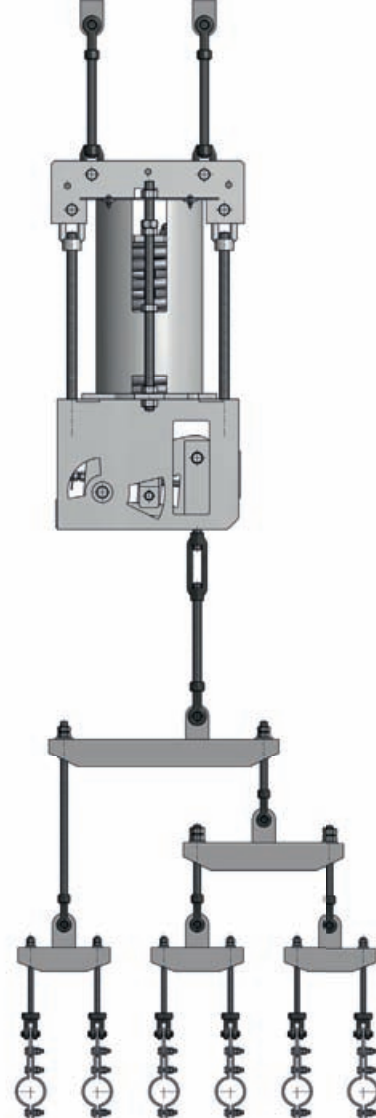
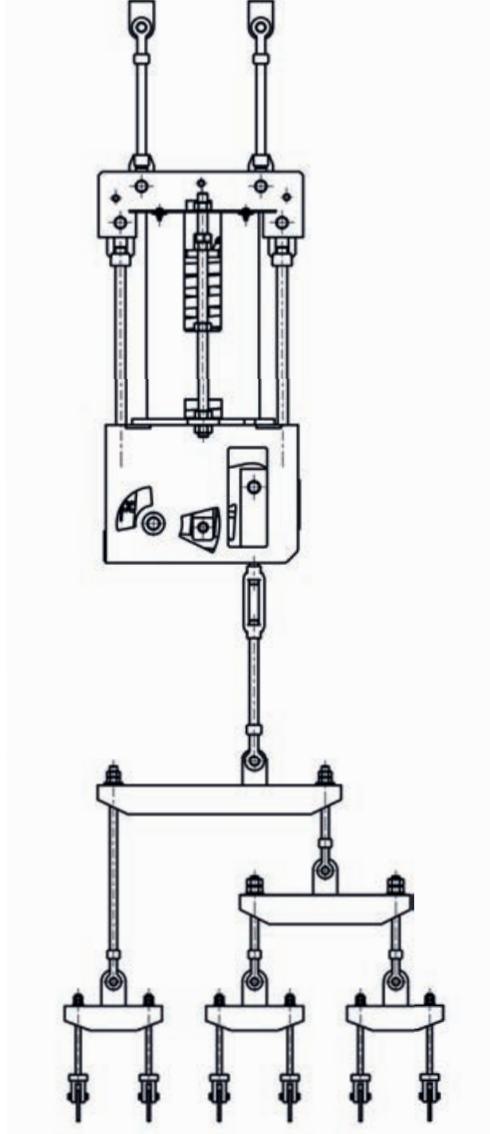
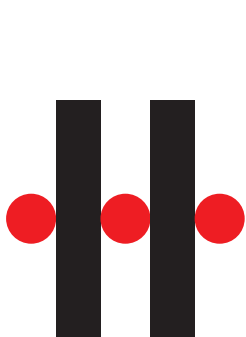
For the further use in PDMS an export file will be loaded in PDMS by an interface of “ELSE”. With these data the load chains for PDMS will be modulated from the Hesterberg 3D-parts catalogue and inserted in the model. All program features of PDMS, such as collision detection, are completely available.



*Please use our specific experiences,
to match your problems precisely.*

REFERENCES





HESTERBERG GMBH & CO. KG

Egerstraße 29

58256 Ennepetal - Germany

T: +49 (0) 2333 - 96 85 -0

F: +49 (0) 2333 - 96 85 - 30

M: info@hesterberg-gmbh.com

W: www.hesterberg-gmbh.com